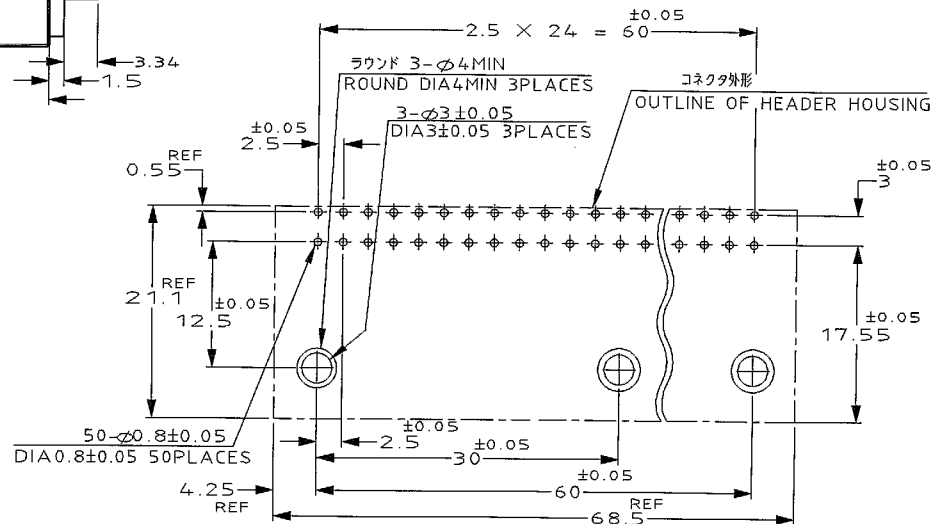
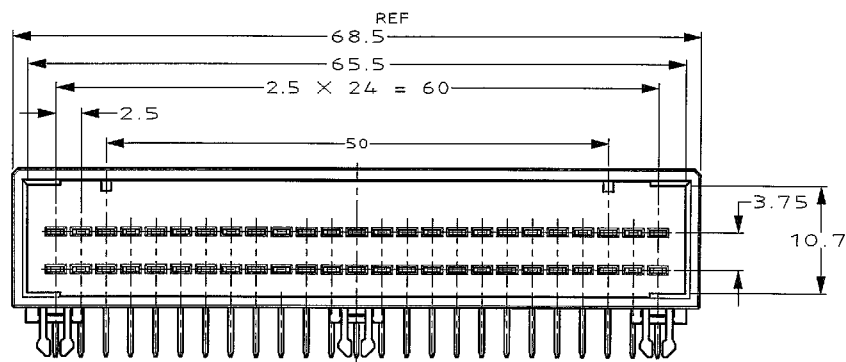
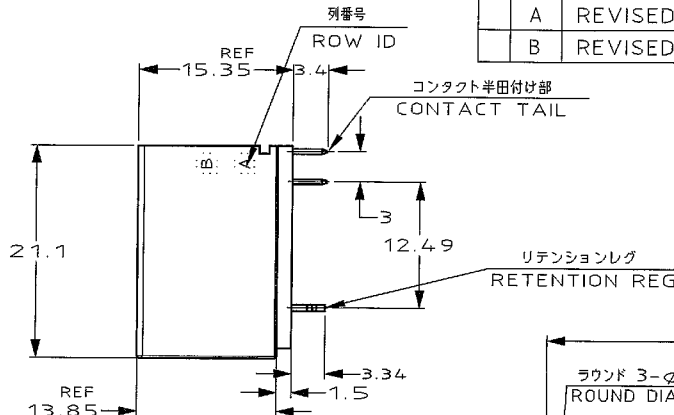
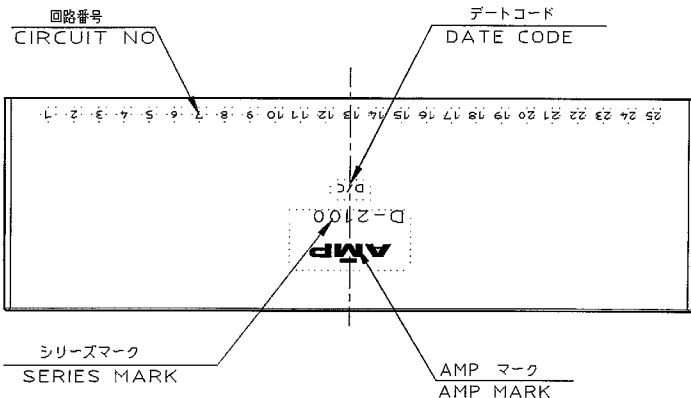


THIS DRAWING IS UNPUBLISHED. RELEASED FOR PUBLICATION 1999
 © COPYRIGHT 1999 BY AMP INCORPORATED. ALL RIGHTS RESERVED.

LOC	DIST	REVISIONS						
J	-	P	LTR	DESCRIPTION	EEN	DATE	DWN	APVD
		0		RELEASED	FJ00-0406-99	21/JUL '99	M.H.S.M	
		A		REVISED	FJ00-1118-00	10/AUG '00	M.H.S.M	
		B		REVISED	FJD0-0172-03	27/FEB '04	T.S.	RM

- 1 : AS SHOWN
 - 1 : 本図



NOTES

1. MATERIAL: HOUSING: GLASS FILLED THERMO PLASTIC, POLYESTER (94V-0), COLOR: BLACK

TAB CONTACT: COPPER ALLOY
 RETENTION LEG: BRASS

2. FINISH (CONTACT AREA): 0.38 μm MIN GOLD PLATING OVER Ni PLATING

3. FINISH (RETENTION LEG): TIN PLATED (CONTACT TAIL) OVER NICKEL

注記

1. 材料: ハウジング: ガラス入り熱可塑性 ポリエステル樹脂 (94V-0), 色: 黒
 タブコンタクト: 銅合金
 リテンションレグ: 黄銅

めっき: コンタクト: 全面Ni下地
 接触部: 0.38 μm MIN金めっき

めっき: リテンションレグとコンタクト半田付け部
 : ニッケル下地の上にスズめっき

推奨基板取付け寸法 (公差: ±0.05)
 PC 基板厚: 1.6 ± 0.4
 (コネクタ搭載面)

RECOMENDED PC BOARD HOLE PATTERN (TOL: ±0.05)
 PC BOARD THICKNESS: 1.6 ± 0.4
 (CONNECTOR MOUNT SIDE)

THIS DRAWING IS A CONTROLLED DOCUMENT FOR AMP INCORPORATED. IT IS SUBJECT TO CHANGE AND THE CONTROLLING ENGINEERING ORGANIZATION SHOULD BE CONTACTED FOR THE LATEST REVISION.		CHK M.HIGO 21 JUL '99	APVD S.MANABE 21 JUL '99	WIRE RANGE 総合電線部管理	INSULATION DIA 試験仕様
DIMENSIONS: 単位: mm		TOLERANCES UNLESS OTHERWISE SPECIFIED: 一般公差: 1% ±0.2, 3% ±0.25, 10% ±0.3, ANGLE: ±3'		Tyco Electronics AMP K.K. Kawasaki, Japan	
MATERIAL 注記参照 SEE NOTES		FINISH 注記参照 SEE NOTES		NAME 水戸ヘッダーアセンブリー 50P ≒ダイナミック D-2000 2列 40ワータイプ HORIZONTAL HEADER ASS'Y 50P ≒DYNAMIC D-2000 DOUBLE ROW FOR DRAWER	
CUSTOMER DRAWING		WEIGHT -		SIZE (CAGE CODE) DRAWING NO A3 00779 C 1318579	
		SCALE 尺 2-1		SHEET 1 OF 1 REV B	